

+ PLUS

- 1** CUSTOMIZED PRODUCTS
- 2** PRODUCT ENGINEERING
- 3** QUALITY FIRST
- 4** WAREHOUSE: LONG TERM STOCK AND FIXED PRODUCT PRICE
- 5** ASSEMBLING AND TESTING
- 6** TRACEABILITY: FROM RAW MATERIAL TO THE FINISHED PRODUCT
- 7** CUSTOMIZED PACKAGING



✓ QUALITY



ISO 9001:2015

Shree-turned-parts is managed in all of its process according to UNI EN ISO 9001:2015, certified by IAF approved body. All the internal procedures, together with all the company's functions managed by the staff, are classified and organized. A constant improvement is the staple of company's approach to the business.

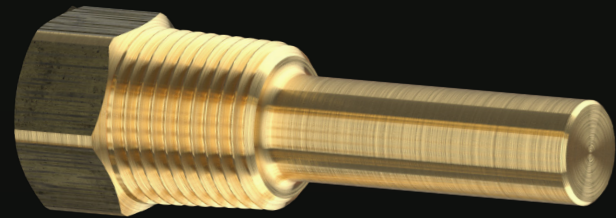
On the production side, global quality, as a concept, is at the heart of Shree-turned-parts idea of the business. Shree-turned-parts invests every year in improving its quality tools and staff's quality competences. Quality office is extremely equipped with several Mitutoyo tools, which enable to reach the most accurate quality ever. A full range of quality checks could be agreed together with customer in order to meet customer's requirements.



SHREE



CUSTOM



Shree-turned-parts' team works in direct contact with its customers to project, engineering and develop the required brass components. Thanks to its agility, flexibility and technical knowledge, Shree-turned-parts' team is able to follow every single customer requests, under the point of view of the production, documentation, packaging, delivery, traceability and testing of the products.

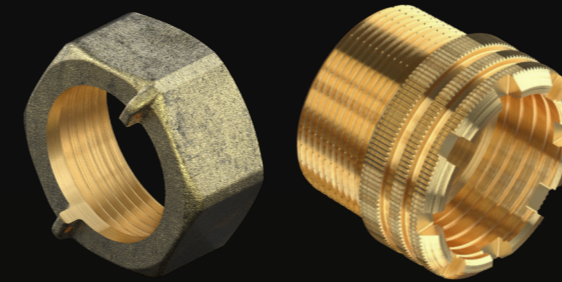
“ Choosing Shree-turned-parts means finding a reliable and accurate partner able to follow you on your business growth. ”



MANUFACTURING

HOT FORGING AND CNC MACHINING

Shree-Turned-Parts relies on a strong, tight and long-lasting relationship with external machining & forging companies. Automatic forging presses allow to forge mainly nuts & inserts up to 2" of diameter whilst all other products are forged through traditional presses. Forged parts are then machined in our CNC department.

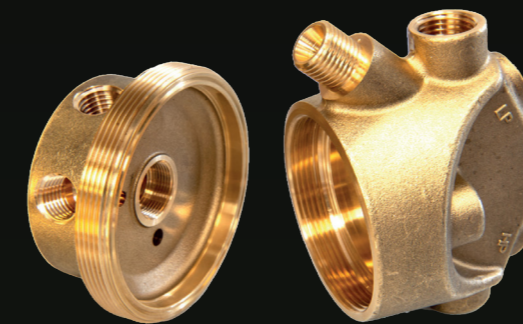


PROCESSING AND AUTOMATIC LATHES

Single and multi-spindle lathes as well as CNC lathes are used to obtain components made out of various types of brass rod. Multi-spindles lathes available allow to manufacturing rod up to 38mm of diameter, whilst CNC single spindle lathes can reach up to 100mm of diameter.

CNC VERTICAL MACHINING CENTERS

Thanks to this CNC machinery it is possible to approach complex drilling operations on four axis, rotating on one of them axis from zero up to 360 degrees. The accuracy of the machines allow to drill miniscule holes and hold very narrow tolerances. Machines, which could reach up to 12K rounds, are also equipped with several specific tools.



CORE BUSINESS

Bespoke brass nuts, inserts and components, both hot forged and machined with CNC, or turned with single and multi-spindle lathes.



SHREE IMPEX
Plot No. 527/13, Satellite Park,
361006 Jamnagar (GJ) – INDIA



Phone +91 635 50 78 767



Mail info@shreeturnedparts.com

WWW.SHREETURNEDPARTS.COM